







With our knowledge, passion and the involvement of our professional team, in just a few years we have turned a small business into a leading window & door joinery provider in Poland.

Today, we can offer the highest quality PVC joinery, as well as sliding systems, aluminium, mosquito nets, window sills and garage doors.

Our company's goal is to consistently consolidate our position on the Polish and foreign markets, and to systematically extend and improve our product offer.

We manufacture products that meet the expectations of the most stringent of clients, both in terms of quality and functional parameters.

You deserve to have fun and enjoy the maximum comfort in any space that you live, rest, or spend time with your loved ones.



0,76*
W/m2K



aluplast®

IDEAL 8000

HIDDEN POWER OF TECHNOLOGY

IDEAL 8000 is a combination of cutting-edge technical solutions for above-average characteristics ensuring the window's warmth, silence, security and extraordinary aesthetic.

It's a perfect offering for anyone seeking the highest level of comfort at home.

6

Chambers

3

Seals

85

Installation
Depth

48

Glazing
Units
(mm)

V

Weld
V-Perfect

MM

Maco Multi
Matic Fitting

* For a reference window with dim. 1,230*1,480 mm, Ug = 0.5 W/m2K



0,76*
W/m²K



aluplast®

INTERTEC 85

A MODERN SYSTEM OF WINDOW PROFILES

With its innovative solutions, Aluplast Interotec 85 is an advanced window profiles system that provides superb technical parameters and high comfort of use.

The system's profiles feature timeless, classic design with balanced proportions, perfectly matching the current trends.

7

Chambers

3

Seals

85

Installation
Depth

48

Glazing
Units
(mm)

V

Weld
V-Perfect

MM

Maco Multi
Matic Fitting

* For a reference window with dim. 1,230*1,480 mm, U_g = 0.5 W/m²K

* Frame-sealed steel is not standard, surcharge to be added according to surcharge price list.



0,70*
W/m²K



aluplast®

NEW

IDEAL NEO MD

SIMPLE STRUCTURES AND MINIMALISTIC DESIGN

IDEAL NEO MD is an extremely attractive design proposition for customers who value timeless style. A simple, symmetrical, cubist shape is a distinguishing feature of the windows made in this system.

IDEAL NEO MD system was inspired by Bauhaus style. This style once revolutionized architecture. Simple and beautiful design for everyone. A lot of light and a combination of the interior with the elements from the outside.

6

Chambers

3

Seals

76

Installation
Depth

48

Glazing
Units
up to (mm)

V

Weld
V-Perfect

MM

Maco Multi
Matic Fitting

* For a reference window with dim. 1,230*1,480 mm, Ug = 0.5 W/m²K

* Frame-sealed steel is not standard, surcharge to be added according to surcharge price list.



0,79*
W/m²K



aluplast®

IDEAL 7000

MODERN ARCHITECTURE

The IDEAL 7000 is an example of the synergistic use of the properties of profiles and insulating glass to create windows featuring a very low heat transfer.

The system enables free joining of the frames with other 85 mm-deep series of profiles.

6

Chambers

2

Seals

85

Installation
Depth

48

Glazing
Units
up to (mm)

V

Weld
V-Perfect

MM

Maco Multi
Matic Fitting*

* For a reference window with dim. 1,230*1,480 mm, U_g = 0.5 W/m²K

* Charged extra

* Frame-sealed steel is not standard, surcharge to be added according to surcharge price list.



0,86*
W/m2K



aluplast®

IDEAL 4000

MORE POSSIBILITIES

The rigid profile structure with the installation depth of 70 mm and large chambers for steel reinforcements ensure optimal static parameters and enable the manufacture of large size windows.

The multi-chamber build is a guarantee of high thermal and acoustic insulation capabilities.

5

Chambers

2

Seals

70

Installation
Depth

40

Glazing
Units
up to (mm)

V

Weld
V-Perfect*

MM

Maco Multi
Matic Fitting*

* For a reference window with dim. 1,230*1,480 mm, $U_g = 0.5 \text{ W/m}^2\text{K}$

* Charged extra

* Frame-sealed steel is not standard, surcharge to be added according to surcharge price list.



0,75*
W/m²K



ACTIVE PLUS THERM

INNOVATIVE SOLUTIONS

The Active Plus Therm is a 6-chamber profile system capable of accommodating triple glazing units of up to 48 mm. It provides excellent thermal and acoustic parameters of windows.

Extra middle sealing enhance the window's acoustic and thermal parameters.

6

Chambers

3

Seals

80

Installation
Depth

48

Glazing
Units
up to (mm)

V

Weld
V-Perfect*

MM

Maco Multi
Matic Fitting

* For a reference window with dim. 1,230*1,480 mm, U_g = 0.5 W/m²K

* Charged extra

* Frame-sealed steel is not standard, surcharge to be added according to surcharge price list.



0,77*
W/m2K



SYNEGO MD

DISCOVER THE WARMTH OF YOUR HOME

Thanks to the new SYNEGO windows, your home will become an oasis of warmth, silence and security. Compared to the current windows standard, SYNEGO provides 50% better thermal insulation*.

With that you'll get significantly lower heating bills and discover a new level of home comfort.



7

Chambers

3

Seals

80

Installation
Depth

48

Glazing
Units
(mm)

V

Weld
V-Perfect

MM

Maco Multi
Matic Fitting

* For a reference window with dim. 1,230*1,480 mm, Ug = 0.5 W/m2K



REHAU HST

SAVE ON THE HEATING COST

The lift & slide SYNEGO doors provide silence, tranquillity and relaxation in your home.

They reduce noise by up to 43 decibels, which corresponds to 20x reduction and significantly enhances the quality of life. Feel well at your place – no matter how noisy are your surroundings.



Colourful Core

The profiles are mass-dyed, which allows windows to keep their aesthetic look in the event of a mechanical damage that could happen during many years of window joinery usage.

Veneering

We use proven, very high quality veneers that are highly resistant to chemicals, atmospheric conditions and temperature changes.



REHAU SYNEGO SLIDE

DISCOVER NEW EASE OF OPENING

Elegant connection between inside and outside. Discover modern architectural possibilities and new room design concepts. Sliding windows and doors from the SYNEGO SLIDE profile system will surprise you with their possibilities.

As a sliding window, the SYNEGO SLIDE offers a lot of light and flexible design options. Space-saving, working seamlessly and elegant, it can also prove to be a slick element of your living room's interior design.

The modern design is completed with the capability of veneering the entire profile with decorative foil – the middle notch will no longer be left behind in a different colour. This way you'll get a uniform look of your windows and doors.

The window variant of SYNEGO SLIDE offers brand new freedom in living space design.



aluplast®

SMART SLIDE

HIGH STRUCTURE TIGHTNESS

The smart-slide door is a new solution in the sliding door/window segment, which could ultimately be an attractive alternative to PSK/PATIO doors. This is an excellent solution for single-family houses, but also for public buildings where ease of use and reliability are expected of patio doors.

The innovative closing mechanism allows for simple and intuitive handling, similar to the solutions used in lift & slide doors, like HST.

The specialised window fittings ensure that after unlocking, the sash moves freely and with no resistance on the carriage, relative to the unopened parts of the structure. The locking mechanism provides gentle sash closing within the frame, thus enabling easy handling of the slide doors.



aluplast®

HST 85

ONE SYSTEM – THREE SOLUTIONS

The new HST 85 mm door system is, on the one hand, a response to the expectations in the field of creating larger and larger window structures, and on the other hand, through structural changes, and above all the use of wider glazing units with a width of up to 51 mm, it allows obtaining above-average thermal insulation properties.

A novelty in this segment is the modular nature of the construction, which allows three free configurations of the product, depending on the expected thermal parameters. The ideal solution for those who want a comfortable connection between the interior and the terrace and a panoramic view achieved by a large glazed area is the use of HST 85 mm lift-and-slide doors. An unquestionable advantage of this type of terrace door is the feasible dimensions of the construction.

aluplast®

DOOR SYSTEM IDEAL 4000

The IDEAL 4000 Series is a basic offering from the aluplast exterior door solutions. With the multi-chamber installation with a depth of 70 mm and the use of door threshold with a thermal insulation breaks, it provides very good thermal insulation parameters.



aluplast®

DOOR SYSTEM IDEAL 7000

The IDEAL 7000 Series opens new possibilities for exterior door manufacture. With multi-chamber construction, installation depth of 85 mm and the ability to use glazing units and fillings up to 50 mm wide, we were able to improve thermal insulation parameters of the structure to $U_f = 1.2 \text{ W/m}^2\text{K}$.



The characteristic features of doors in aluplast systems are their solidity and elegance. Thanks to multi-chamber construction, a casing depth of 70 to 85 mm, they have very good thermal insulation parameters.

*Frame-sealed steel is not standard, surcharge to be added according to surcharge price list.



NEW M-DRIVE

The main design assumptions that guided the engineers when creating this product, there was a desire to achieve the maximum efficiency with maximum simplification of production, and thus, while minimizing the number of system components. This is how the HS M-Drive lift and slide door were created.

The basic elements are - a frame with a depth of installation 190 mm with steel reinforcement, which is in the Therm version additionally supplemented with thermal filling, and the ssh profile with an installation depth of 80 mm. The system is complemented by an extremely „warm” multi-chamber threshold.





Aluplast standard colours



Golden Oak
(AP 23)



Walnut
(AP 27)



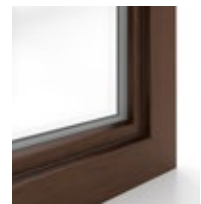
Anthracite
(AP 40)



Anthracite,
sand structure
(AP 60)



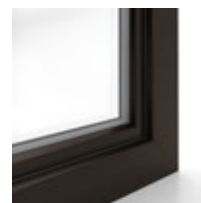
Mahogany
(AP 05)*



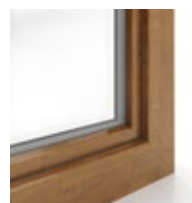
Dark Oak
(AP 06)*



Grey
(AP 34)*



Palisander
(AP 33)*



Khaki Oak
(AP 95)*

Monolit

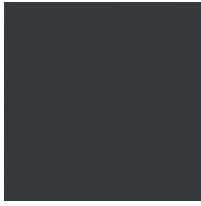
A window is one of the most crucial elements of the interior. It plays both functional and decorative roles.

When purchasing windows, it's worth paying attention to the selection of appropriate colouring and structure of the veneer.

The proposed wide range of colours allows you to perfectly match the window joinery to the building's façade and its interior style.

* The Aluplast standard colours have a longer lead time of 4 weeks.

Rehau standard colours



Smooth
anthracite
(REHAU 930L)



Anthracite
(REHAU 4443)



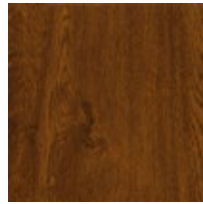
Winchester XA
(REHAU 1208L)



Palisander
(REHAU 9631)



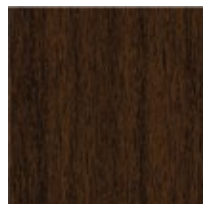
Golden Oak
(REHAU 7512)



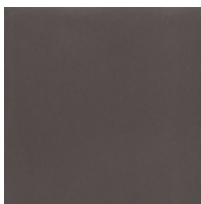
Walnut
(REHAU 225L)



Mahogany
(REHAU 9632)

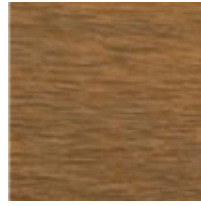


Dark Oak 2
(REHAU 4914)

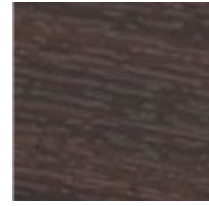


Alux DB 703
(REHAU 1642L)

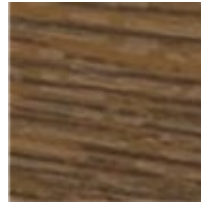
Wital standard colours



Golden Oak
UK101-Z8



Mahogany
UJ301-Z8



Walnut
UK103-Z8



Smoked Oak
UR401-Z8



Winchester
A1002-Z3



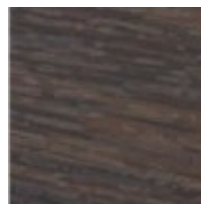
Black Brown
KDD17-Z8



Chocolate
KDB75-Z8



Anthracite
KDB74-Z8



Dark Oak
UQ901-Z8



Light Grey
KACV8-Z8



Ponzio®

MODERN ALUMINUM SYSTEMS

The aluminium PONZIO construction systems are used in window & doors structures, façade walls, conservatories, sun visors, as well as in a variety of specialised solutions, such as fire protection structures.

The innovative system solutions used in buildings with various purposes meet the strict energy efficiency, comfort and security requirements.

The specialised window fittings ensure that after unlocking, the sash moves freely and with no resistance on the carriage, relative to the unopened parts of the structure. The locking mechanism provides gentle sash closing within the frame, thus enabling easy handling of the slide doors.



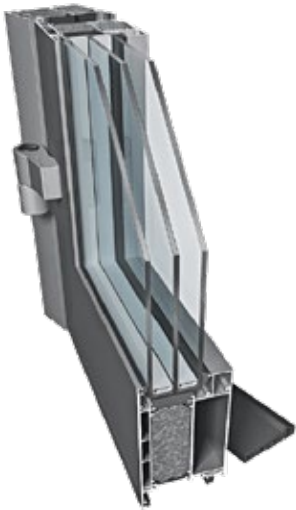
PE50

Aluminium profile system without thermal insulation, intended for internal structures: light walls and glazing, windows and internal doors.



PE68

The three-chamber thermally insulated system for making window and door structures. Profiled 24 mm-wide thermal breaks are used.



PE78N

A three-chamber thermally insulated system for making door structures and windows meeting very good thermal insulation requirements.



SL1600

Lift-and-slide thermally insulated system intended for exterior building elements.

The construction of profiles allows for the creation of stable large structures, even 8-sash structures with very high sash weights.



PF152

A mullion and transom curtain wall system with high thermal insulation, most often used in energy-efficient constructions.

A special thermal insert, filling the space between the panes, improves the parameters of the entire structure both in terms of its shape and properties.



PE52

The system is designed for exterior elements that require minor thermal insulation.

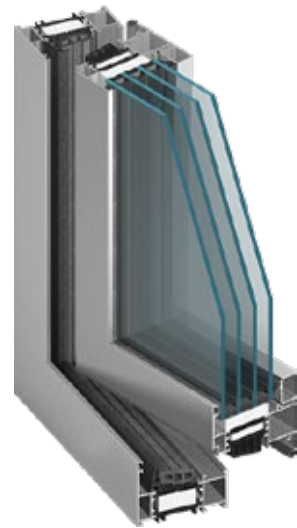




ALUPROF
ALUMINIUM SYSTEMS

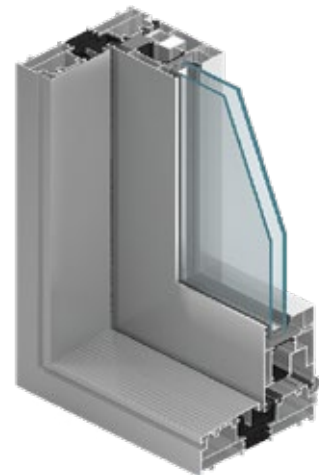
MODERN ALUMINIUM SYSTEMS

The Aluprof aluminium systems enable the production of various types of windows and doors, depending on the scope of use and detailed requirements in terms of functionality, aesthetics, thermal insulation, burglary protection, smoke protection, or fire resistance.



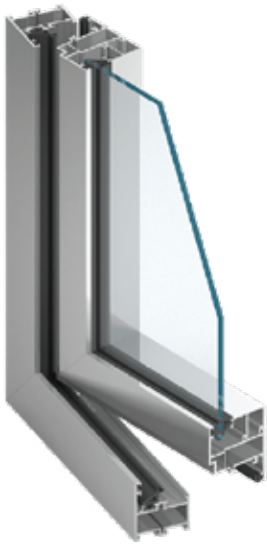
MB-86

The MB-86 window and door system is a high-performance product, which can satisfy the various needs of users. The design of its sections has 3 versions, depending on the requirements for saving heating energy: ST, SI and AERO.



MB-77 HS

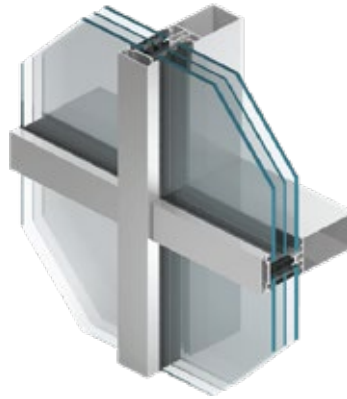
Lift-and-slide doors are an ideal solution for connecting rooms with the outside environment, providing convenient access to a balcony, terrace or open garden space.



MB45

The system is primarily used to make internal fittings of various types of partition walls, windows, doors – including sliding and automatic doors, entrance halls, display windows, cashier boxes, showcases, etc. Serves as a basis for specialised solutions: partitions.

It also allows for the production of doors and exterior glazings, where profiles do not need to be thermally insulated.



MB-SR50N

The MB-SR50N mullion-transom system is intended for constructing and making lightweight suspended and infill curtain walls, as well as roofs, skylights and other spacial structures.

In line with current trends in architecture, it enables the profiles of mullions and transoms to be flush with the inside of the façade and achieve different external appearances. This system also serves as the basis for the MB-SR50N HI+ version with enhanced thermal insulation.



MB70

An aluminium system used to make exterior architectural elements requiring very good thermal insulation and soundproofing, e.g.: various types of windows, doors, antechambers, shop windows, spatial structures.

It has a version with increased thermal insulation, due to the use of special insulating inserts inside the sections and in the space under the glass.





MODERN ALUMINIUM SYSTEMS

In creating ALURON systems, we drew upon many years of construction experience. ALURON solutions are distinguished by copyright utility models and patent owner ship.

All systems are interconnected, which enables the use of many common parts and accessories.



AS 75 WINDOW

An innovative door-window system
The triple-chamber AS 75 system has been designed for thermally insulated window and door structures by means of state-of-the-art ANTI-BI-METAL technology, which protects the door leaves from heat de formation as well as very low temperatures.



AS 75 DOOR

An innovative door-window system
The triple-chamber AS 75 system has been designed for thermally insulated window and door structures by means of state-of-the-art ANTI-BI-METAL technology, which protects the door leaves from heat de formation as well as very low temperatures.



ACS 50

Window and door systems for interiors.

The ACS 50 System is a modern structure designed for the production of fixed and openable windows as well as single and double leaf doors, and also comes in a smoke-tight version. The ACS 50 system possesses frames that enable the mounting of an all-glass sash. It is characterised by highly acoustic properties and durable construction.



AF 50

Single-profile facade in mullion-mullion technology

The AF 50 facade system, based on mullion-mullion technology, allows for a broad spectrum of structure shaping and is used in modern buildings. This system utilises designs of highly insulating properties, tightness and material optimisation.



AS 178 HS

AS 178HS system combines innovative solutions with modern design, creating next-gen, fully glazed HS doors. The system gives the opportunity to create large, moving patio doors with low and warm threshold. Its structural mechanisms allows for safe and comfortable movement of sash, both manually and automatically. Hardware from renowned suppliers allows even very heavy sash to be operated with ease.





Monolit

FOUNDATIONS, WARM WINDOW SILLS. FOR TODAY'S NEEDS

Monolit presents innovative solutions that ideally replace standard foam and door point supports.

The remarkable properties of MonoTHERM perfectly seal and isolate the window from the surface, and it's able to withstand much greater loads without bending or damage.

NEW OFFERING MONOCORE

Warm window sill MonoCORE

- standard dimension: 1.200/350/65,
- MonoTHERM hard core material,
- a combination of two materials: XPS and MonoTHERM,
- creates an extremely sturdy support for the window,
- available in three versions: double-sided, external, internal,
- adaptable to any profile system.





thermal skirting board

MonoTHERM LIGHT

- standard dimension: 1.200/50/35 mm,
- adaptable to any PVC, ALU or timber profile,
- optimised coefficient thanks to highly insulating properties,
- certified component for passive houses,
- Easy and quick installation, stable support of the window in the wall.



Warm window sill

- removal of thermal bridges,
- available in three versions: double-sided, external, internal,
- appropriate support of the window in the wall,
- adaptable to any profile,
- standard dimensions: 1,250/350/65 available in heights from 55 mm to 75 mm.



Sill plates

MonoTHERM 130 | 170

- the specially hardened material in combination with XPS creates an exceptionally warm sill plate $\lambda = 0.04 \text{ W/m}^2\text{K}$,
- height from 30 to 300 mm (in 10 mm steps),
- length: 1.200 mm,
- available widths: 130 mm, 150 mm, 170 mm.



Sill plates

MonoTHERM 60 | 70

- specially hardened expanded polystyrene,
- thermal extension for doors and windows made of PVC, ALU and wood,
- height from 30 to 300 mm (in 10 mm steps),
- length: 1.200 mm,
- available widths: 60 mm, 70 mm,
- can be manufactured to any window profile



Monolit Michał Godlewski
ul. Strzelnicza 12,
18-300 Zambrów
+48 509 149 757
biuro@monolitokna.pl
www.monolit-okna.pl

